



คณะบดีคณะกรรมการเกษตร
เลขที่..... 0539
วันที่..... 21 เม.ย. 2557

คณะบดีกรรมการเกษตร
เลขที่..... 1961 เวลา..... 15:51 น.
วันที่..... 10 เม.ย. 2557

บันทึกข้อความ

ส่วนราชการ สาขาวิชาอารักขาพืช คณะผลิตกรรมการเกษตร โทรศัพท์ 053-875840

ที่ ศจ 0513-3.4/178

วันที่ 10 เมษายน พ.ศ. 2557

เรื่อง ขอรับการพิจารณาสนับสนุนงบประมาณในการนำเสนอผลงานวิจัยในที่ประชุมวิชาการระดับนานาชาติแบบ
บรรยาย ปิงประมาณ 2557

เสนอ คณะบดีคณะกรรมการเกษตร

ข้าพเจ้าขอรับการสนับสนุนงบประมาณในการนำเสนอผลงานวิจัยในที่ประชุมวิชาการระดับนานาชาติแบบ
บรรยาย ปิงประมาณ 2557 ตามรายละเอียดดังนี้

- ชื่อ นาย ณัฐดนัย ลิขิตตระการ อายุ 31 ปี
สังกัด สาขาวิชาอารักขาพืช
โทรศัพท์ 053-875847 โทรสาร 053-875840
วุฒิการศึกษา ปริญญาเอก
ตำแหน่งทางวิชาการ อาจารย์ ดร.
- นำเสนอผลงานวิจัยแบบบรรยาย เรื่อง *Taxonomy, Distribution, and Conservation of flat-back millipedes in Thailand*
ชื่อการจัดประชุมฯ *The 16th International Congress of Myriapodology (16ICM)* ครั้งที่ 16
ระหว่างวันที่ 20-25 กรกฎาคม 2557 จำนวน 6 วัน ณ ประเทศสหพันธ์สาธารณรัฐเช็ก
หน่วยงานเจ้าภาพร่วม 2 หน่วยงาน ได้แก่
1) *Faculty of Science, Palacký University, Olomouc, Czech Republic*
2) *Institute of Soil Biology, Biological Centre of the Academy of Science of the Czech Republic, České Budějovice, Czech Republic*
ประเทศในเขตพื้นที่
 ทวีปเอเชียและโอเชียเนีย
 ทวีปยุโรป แอฟริกา อเมริกา
- ผลงานวิจัยนี้ เป็นผลจากโครงการวิจัย เรื่อง *ซิสเทมาติกส์และชีวภูมิศาสตร์ของสัตว์ไม่มีกระดูกสันหลังในดิน (หอยทาก กิ้งกือ ตะขาบ และไส้เดือนดิน) และบทบาทในระบบนิเวศเชิงเกษตร*
แหล่งทุนวิจัยที่ได้รับ สำนักงานกองทุนสนับสนุนงานวิจัยเมธีวิจัยอาวุโส (สกว.) ปิงประมาณที่ได้รับทุนวิจัย
2555-2558
- รายละเอียดงบประมาณที่ได้รับการสนับสนุนในการนำเสนอผลงานวิจัยจากหน่วยงานอื่น
- (ไม่มี)
- ขอรับการสนับสนุนครั้งล่าสุดปิงประมาณ
- (ยังไม่เคยขอรับการสนับสนุน)

ในการนี้ข้าพเจ้าขอรับการสนับสนุน เป็นเงิน 30,000 บาท (สามหมื่นบาทถ้วน)

ข้าพเจ้าขอรับรองว่าข้อความข้างต้นเป็นจริงทุกประการ โดยได้แนบหลักฐานประกอบการพิจารณา ดังนี้

- 1. หลักฐานการจัดประชุมที่แสดง International Committee / หน่วยงานเจ้าภาพร่วม จำนวน 1 ชุด
- 2. บทความของผลงานวิจัยเรื่อง *Taxonomy, Distribution, and Conservation of flat-back millipedes in Thailand* จำนวน 1 ชุด

จึงเรียนมาเพื่อโปรดพิจารณา

ลงชื่อ *ณัฐดนัย ลิขิตตระกูล*
(อาจารย์ ดร. ณัฐดนัย ลิขิตตระกูล)
ผู้ขอรับการสนับสนุน

[Signature]
(อาจารย์ ดร. ชัชวีก์ ถนอมถิ่น)
ผู้ช่วยคณบดีคณะผลิตกรรมการเกษตร

[Signature]
10/4/57

[Signature]
วิษณุพงษ์ วัฒนศิริ

[Signature]
(รองศาสตราจารย์ประวีตร พุทธานนท์)
คณบดีคณะผลิตกรรมการเกษตร
21 เม.ย. 2557



16th International Congress of Myriapodology Olomouc, Czech Republic, 20–25 July 2014

<http://myriapoda.upol.cz>

Olomouc / České Budějovice, April 18, 2014

To whom is concern with:

A letter of invitation

This is to confirm that **Natdanai Likhitrakarn Ph.D.**, from the Department of Plant Protection, Faculty of Agricultural Production, Maejo University, Sansai, Chiang Mai, 50290, Thailand, **has been invited to attend the 16th International Congress of Myriapodology held in Olomouc, the Czech Republic, on July 20-25, 2014** and to present new results in myriapodological research **and to visit the Department of Ecology and Environmental Sciences, Faculty of Science, Palacky University, Olomouc, preferably from July 15 till July 27, 2014.**

His participation in the 16th Congress will be highly appreciated. From the side of the Organising Committee of the 16th International Congress of Myriapodology, Dr. Ivan. H. Tuf and Dr. Karel Tajovský are responsible for the programme and scientific part of the congress.

Furthermore his visit of Palacky University, Olomouc, will be associated with study of scientific materials and discussion on prospects for future cooperation. For this part of his stay in the Czech Republic, Dr. Ivan. H. Tuf is responsible for the scientific programme.

On behalf of the Organising Committee 16-ICM:

UNIVERZITA PALACKÉHO
Přirodovědecká fakulta
Katedra ekologie
a životního prostředí
771 46 OLOMOUC, tř. Svobody 25

Dr Ivan H Tuf

Department of Ecology and Environmental Sciences, Faculty of Science, Palacky University, Olomouc
ivan.tuf@upol.cz, Mobil +420 777 262 924, Phone +420 585 634 556, Fax +420 585 634 553

Biologické centrum AV ČR, v.v.i.
USTAV PŮDNÍ BIOLOGIE
Na Sádkách 7
370 05 České Budějovice
IČ: 600 77 344

Dr Karel Tajovský

Institute of Soil Biology, Biology Centre AS CR, v. v. i., České Budějovice
tajov@upb.cas.cz, Mobil +420 602 123 708, Phone +420 387 775 761, Fax +420 385 310 133

Taxonomy, Distribution, and Conservation of flat-back millipedes in Thailand

Likhitrakarn, N.(1), Golovatch, S.I.(2) & Panha, S.(3)

(1) Division of Plant Protection, Faculty of Agricultural Production,
Maejo University, Chiang Mai, 50290, THAILAND

(2) Animal Systematics Research Unit, Department of Biology, Faculty of Science,
Chulalongkorn University, Bangkok, THAILAND

(3) Russian Academy of Sciences, Moscow, RUSSIA.

E-mails: kongerrrr@hotmail.com

Abstract

Among millipedes in the world, in terms of species richness usually >40% are due to the family Paradoxosomatidae. Like most of the Diplopoda, they are amongst the most important decomposers in forest ecosystems. This family shows a nearly global distribution, native species being absent only from North and much of Central America. The bulk of paradoxosomatid generic and species diversity is confined to tropical forest or its derivatives, especially in Southeast Asia. Previous explorations of the diplopod fauna of Thailand were random and mainly focused on the northern, best-forested areas, such as Chiang Mai Province, while only to a lesser extent on several southernmost regions close to the borders to Malaysia and Myanmar. Until recently, no special surveys, in particular such that would cover the whole territory of the country in a more regular and steady way, have been undertaken. In Thailand, Enghoff (2005) reported 105 species of millipedes in Thailand. However 56 additional species have been described a decade later. Among 161 extant species are reported to date, 71 species (~44%) belong to family Paradoxosomatidae, the most diverse family within the largest order Polydesmida of millipedes in the world. After revision of two dominant genera (*Orthomorpha* and *Tylopus*), 49 species (~30%) have been described from various habitats throughout Thailand. The genus *Orthomorpha* are recorded widespread especially in the southern areas. Unlike genus *Tylopus*, all species are probably confined to specific forest types, especially in the north montane which approximately above 500 meters elevation. However this is a beginning part of the millipede diversity in this region, many congeners are still waiting for our discovery in Thailand and neighboring countries such as Laos, Myanmar, Cambodia and Vietnam, as well as southern China.

This basic taxonomic information is useful not only *per se*, at least as augmenting and refining our knowledge of Thailand's biodiversity and distributions, but is also deemed of importance for conservation, agricultural and urban management, because many diplopods in Thailand swarm frequently in natural, disturbed and man-made habitats.



16th International Congress of Myriapodology

Olomouc, Czech Republic, 20–25 July 2014

[HOME \(HTTP://MYRIAPODA.UPOL.CZ/\)](http://myriapoda.upol.cz/)

[IMPORTANT DATES \(IMPORTANT-DATES.HTML\)](#)

[REGISTRATION \(REGISTRATION.HTML\)](#)

[INSTRUCTIONS TO PARTICIPANTS \(INSTRUCTIONS-TO-PARTICIPANTS.HTML\)](#)

[PROGRAM \(PROGRAM.HTML\)](#)

[EXCURSION \(EXCURSION.HTML\)](#)

[ACCOMODATION \(ACCOMODATION.HTML\)](#)

[TRAVEL INFORMATION \(TRAVEL-INFORMATION.HTML\)](#)

[POST-CONFERENCE TOUR \(POST-CONFERENCE-TOUR.HTML\)](#)

[PHOTOGALLERY \(PHOTOGALLERY.HTML\)](#)

[CONTACT US \(CONTACT-US.HTML\)](#)



[under/maps.php?](#)

Welcome to this website!

We cordially invite you to participate in this scientific conference devoted to centipedes, millipedes, velvet worms, pauropods and symphylans! The **16th International Congress of Myriapodology (16ICM)**, organised under the auspices of [Centre International de Myriapodologie \(http://www.myriapodology.org/\)](#), will be held at the **Faculty of Science, Palacký University, Olomouc, the Czech Republic**, from **Sunday, 20 July to Friday, 25 July 2014**.

The organizing institutions are:

[Faculty of Science, Palacký University, Olomouc, Czech Republic \(http://www.prf.upol.cz/en/\)](http://www.prf.upol.cz/en/)
[Institute of Soil Biology, Biological Centre of the Academy of Science of the Czech Republic, České Budějovice, Czech Republic \(http://www.upb.cas.cz/en\)](http://www.upb.cas.cz/en/)

As with previous congresses, 16ICM will begin with a welcome reception on Sunday evening. There will be four days of single-session meetings beginning Monday morning, interrupted on Wednesday by mid-congress full-day tour. 16ICM will officially close on Friday evening at the Congress Dinner.

A [list \(registration.html\)](#) of already registered participants

Fee

Full Fee and the Student Fee will include welcome reception on Sunday, 20 July, conference attendance, morning and afternoon coffee and tea, lunches, Wednesday full-day tour and print copy of conference proceedings.

Fee for accompanying person(s) will include welcome reception on Sunday, 20 July, and the Wednesday full-day tour.

Full Fee	300€ before 30 April,	a late payment penalty of 50€ will be imposed from 1 May
Student Fee	220€ before 30 April,	a late payment penalty of 50€ will be imposed from 1 May
Accompanying Person Fee	40€ before 30 April,	a late payment penalty of 10€ will be imposed from 1 May

Extra and additional costs:

25€ – the Congress Dinner on Friday 25 July

- half-day tours within the program for accompanying persons (Monday, Tuesday, Thursday, Friday – will be specified)
- lunches for accompanying persons in the University canteen (same as for other participants, payable during registration)
- post-conference tour (Saturday, 26 July – Monday, 28 July – will be specified)

Payment

International bank account number (IBAN) for payment in EUR is **CZ9801000000433855090287**

SWIFT code (= BIC) is **KOMBCZPP** (or 11-letter version KOMBCZPPXXX)

Bank name is **KB, a.s. pob. Olomouc, Svobody 14, 772 14 Olomouc**

Organization name abbreviation is **UP**

For good identification of your payment you must use variable code in the form **9931040###**, where ### represents your personal number allocated to you after your final registration automatically via e-mail. For easier identification of your payment please add in message to recipient our internal congress code **16ICM-993104771/19** and your surname! We are sorry for complication, but our university is huge company with a lot of payments...

Proceedings book

Participants are encouraged to submit their presentations (lectures and posters) for publication in a special issue of the open-access journal *ZooKeys* (Pensoft). A printed copy of this issue will be included in the congress fee.

History

The congress is going back from Australia again to Europe:

- 1ICM: 1968 – Paris, France
- 2ICM: 1972 – Manchester, UK
- 3ICM: 1975 – Hamburg, Germany
- 4ICM: 1978 – Gargnano, Italy
- 5ICM: 1981 – Radford, USA
- 6ICM: 1984 – Amsterdam, The Netherlands
- 7ICM: 1987 – Vittorio Veneto, Italy
- 8ICM: 1990 – Innsbruck, Austria
- 9ICM: 1993 – Paris, France
- 10ICM: 1996 – Copenhagen, Denmark
- 11ICM: 1999 – Białowieża, Poland
- 12ICM: 2002 – Mtunzini, South Africa
- 13ICM: 2005 – Bergen, Norway
- 14ICM: 2008 – Görlitz, Germany
- 15ICM: 2011 – Brisbane, Australia
- 16ICM: 2014 – Olomouc, Czech Republic

© 2013 16th International Congress of Myriapodology



16th International Congress of Myriapodology

Olomouc, Czech Republic, 20–25 July 2014

Important dates

IMPORTANT DATES (IMPORTANT-DATES.HTML)

REGISTRATION
(REGISTRATION.HTML)

Final registration and payment

open from January, 2014

INSTRUCTIONS TO PARTICIPANTS
(INSTRUCTIONS-TO-PARTICIPANTS.HTML)

Early payment

by 30 April, 2014

Abstract sending

by 15 May, 2014

Congress starts

20 July, 2014

PROGRAM (PROGRAM.HTML)

EXCURSION (EXCURSION.HTML)

ACCOMODATION
(ACCOMODATION.HTML)

TRAVEL INFORMATION (TRAVEL-
INFORMATION.HTML)

POST-CONFERENCE TOUR (POST-
CONFERENCE-TOUR.HTML)

PHOTOGALLERY
(PHOTOGALLERY.HTML)

CONTACT US (CONTACT-US.HTML)

© 2013 16th International Congress of Myriapodology





16th International Congress of Myriapodology

Olomouc, Czech Republic, 20–25 July 2014

[HOME \(HTTP://MYRIAPODA.UPOL.CZ\)](#)

[IMPORTANT DATES \(IMPORTANT-DATES.HTML\)](#)

[REGISTRATION \(REGISTRATION.HTML\)](#)

[INSTRUCTIONS TO PARTICIPANTS \(INSTRUCTIONS-TO-PARTICIPANTS.HTML\)](#)

[PROGRAM \(PROGRAM.HTML\)](#)

[EXCURSION \(EXCURSION.HTML\)](#)

[ACCOMODATION \(ACCOMODATION.HTML\)](#)

[TRAVEL INFORMATION \(TRAVEL-INFORMATION.HTML\)](#)

[POST-CONFERENCE TOUR \(POST-CONFERENCE-TOUR.HTML\)](#)

[PHOTOGALLERY \(PHOTOGALLERY.HTML\)](#)

[CONTACT US \(CONTACT-US.HTML\)](#)

Preliminary program

Sunday	evening Welcome reception (<i>included in registration</i>)
Monday	lectures, evening sight-seeing of the centre of Olomouc
Tuesday	lectures and poster session
Wednesday	full-day tour
Thursday	lectures
Friday	lectures, CIM General Meeting, Congress Dinner (<i>extra cost</i>) at evening

There will be prepared program for accompanying persons for each day except for Wednesday with full-day excursion (common to all participants), program will be facultative and extra costs should be paid together with fee.

© 2013 16th International Congress of Myriapodology



[/counter/maps.php?](#)

[Contact us \(contact-us.html\)](#)

16th International Congress of Myriapodology

Olomouc, Czech Republic, 20–25 July 2014

[HOME \(HTTP://MYRIAPODA.UPOL.CZ\)](#)[IMPORTANT DATES \(IMPORTANT-DATES.HTML\)](#)[REGISTRATION \(REGISTRATION.HTML\)](#)[INSTRUCTIONS TO PARTICIPANTS \(INSTRUCTIONS-TO-PARTICIPANTS.HTML\)](#)[PROGRAM \(PROGRAM.HTML\)](#)

Excursion

Mid-congress excursion will be aimed to cultural/historical as well as natural attractions and landmarks of the wider Olomouc region on Wednesday, 23 July. Travelling will be arranged by hired buses. Admissions and lunch are included in the excursion fee.

© 2013 16th International Congress of Myriapodology

[EXCURSION \(EXCURSION.HTML\)](#)[ACCOMODATION \(ACCOMODATION.HTML\)](#)[TRAVEL INFORMATION \(TRAVEL-INFORMATION.HTML\)](#)[POST-CONFERENCE TOUR \(POST-CONFERENCE-TOUR.HTML\)](#)[PHOTOGALLERY \(PHOTOGALLERY.HTML\)](#)[CONTACT US \(CONTACT-US.HTML\)](#)

1,509 Visitors
8 Oct 2013 - 9 Apr 2014

[/counter/maps.php?](#)

Click to see



16th International Congress of Myriapodology

Olomouc, Czech Republic, 20–25 July 2014

HOME ([HTTP://MYRIAPODA.UPOL.CZ/](http://myriapoda.upol.cz/))

IMPORTANT DATES ([IMPORTANT-DATES.HTML](#))

REGISTRATION
([REGISTRATION.HTML](#))

INSTRUCTIONS TO PARTICIPANTS
([INSTRUCTIONS-TO-PARTICIPANTS.HTML](#))

PROGRAM ([PROGRAM.HTML](#))

EXCURSION ([EXCURSION.HTML](#))

ACCOMODATION
([ACCOMODATION.HTML](#))

TRAVEL INFORMATION ([TRAVEL-INFORMATION.HTML](#))

POST-CONFERENCE TOUR ([POST-CONFERENCE-TOUR.HTML](#))

PHOTOGALLERY
([PHOTOGALLERY.HTML](#))

CONTACT US ([CONTACT-US.HTML](#))

Accomodation

There are a lot of possibilities for accommodation in Olomouc. Your accomodation you will pay at ho(s)tel yourselves.

The accommodation in [Student dormitory](http://www.skm.upol.cz/en/dormitories/dormitory-general-a-svobody/) (<http://www.skm.upol.cz/en/dormitories/dormitory-general-a-svobody/>) of the University in double rooms (in **ca 100 m distance** (<http://www.ekologie.upol.cz/ad/tuf/16ICM-map.jpg>) from conference venue) is the cheapest and will be **booked throughout organisers**. The prices in this dormitory per one bed and night in double room are **240 CZK** (ca 9 €) if 2 persons share one room or **340 CZK** (ca 13 €) in case when one person occupies room alone. There are free (ungarded) parking places around faculty.

Other possibilities involve different hotels and pensions. We recommend the following hotels with reservations for congress participants up to the end of April 2014:

Hotel Arigone (<http://www.arigone.cz/en/>)

you have book a room via their webpages – note your participation on 16ICM

Hotel Pension na Hradě (<http://www.penzionnahrade.cz/en/welcome>)

you have book room via their email – note your participation on 16ICM, there is a discount.

Both possibilities are **in short walking distance** (<http://www.ekologie.upol.cz/ad/tuf/16ICM-map.jpg>) from congress place (10–15 min). Accommodation in these both hotels you must arrange yourself, but you can ask IHT for help if you need :). Free parking possibilities are limited (but there is garage parking for ca 10€ per day in distance of ca 500 m).

1,509 Visitors
8 Oct 2013 - 9 Apr 2014



[/counter/maps.php?](#)

© 2013 16th International Congress of Myriapodology



16th International Congress of Myriapodology Olomouc, Czech Republic, 20–25 July 2014

[HOME \(HTTP://MYRIAPODA.UPOL.CZ/\)](#)

[IMPORTANT DATES \(IMPORTANT-DATES.HTML\)](#)

[REGISTRATION \(REGISTRATION.HTML\)](#)

[INSTRUCTIONS TO PARTICIPANTS \(INSTRUCTIONS-TO-PARTICIPANTS.HTML\)](#)

[PROGRAM \(PROGRAM.HTML\)](#)

[EXCURSION \(EXCURSION.HTML\)](#)

[ACCOMODATION \(ACCOMODATION.HTML\)](#)

[TRAVEL INFORMATION \(TRAVEL-INFORMATION.HTML\)](#)

[POST-CONFERENCE TOUR \(POST-CONFERENCE-TOUR.HTML\)](#)

[PHOTOGALLERY \(PHOTOGALLERY.HTML\)](#)

[CONTACT US \(CONTACT-US.HTML\)](#)

Travel information

Although the Olomouc City has not international airport, there are some possibilities to travel to Olomouc from surrounding airports by trains or buses:

Prague, Czech Republic: 250 km by train

Brno, Czech Republic: 100 km by train

Ostrava, Czech Republic: 101 km by train

Wien, Austria: 212 km by train (no direct trains)

Bratislava, Slovakia: 204 km by train (no direct trains)

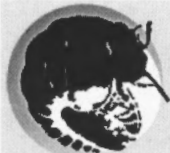
The most frequent (and direct) train/bus connection is mainly between Olomouc and Prague/Brno/Ostrava. In Prague and Brno, there are frequent buses (30 min intervals between 05:30 and 21:00) connecting airport with main train station.

You can look at [train/bus travelling possibilities \(http://izdnirady.idnes.cz/vlakvautobusy/spojeni/\)](http://izdnirady.idnes.cz/vlakvautobusy/spojeni/) (also in English and German)

© 2013 16th International Congress of Myriapodology



[/counter/maps.php?](#)



16th International Congress of Myriapodology Olomouc, Czech Republic, 20–25 July 2014

HOME ([HTTP://MYRIAPODA.UPOL.CZ/](http://myriapoda.upol.cz/))

IMPORTANT DATES ([IMPORTANT-DATES.HTML](#))

REGISTRATION ([REGISTRATION.HTML](#))

INSTRUCTIONS TO PARTICIPANTS ([INSTRUCTIONS-TO-PARTICIPANTS.HTML](#))

PROGRAM ([PROGRAM.HTML](#))

EXCURSION ([EXCURSION.HTML](#))

ACCOMODATION ([ACCOMODATION.HTML](#))

TRAVEL INFORMATION ([TRAVEL-INFORMATION.HTML](#))

POST-CONFERENCE TOUR ([POST-CONFERENCE-TOUR.HTML](#))

PHOTOGALLERY ([PHOTOGALLERY.HTML](#))

CONTACT US ([CONTACT-US.HTML](#))

Organisers

Karel Tajovský
Biology Centre, Academy of Science of the Czech Republic, v. v. i., Institute of Soil Biology
Na Sádkách 7, CZ-37005 České Budějovice, Czech Republic
mobile: +420802123708
e-mail: tajov@upb.cas.cz (<mailto:tajov@upb.cas.cz>)
responsible for: invitation letters, program

Ivan Hedrián Tuf
Department of Ecology and Environmental Sciences, Faculty of Science, Palacký University
Svobody 26, CZ-77146 Olomouc, Czech Republic
mobile: +420777262924
e-mail: ivan.tuf@upol.cz (<mailto:ivan.tuf@upol.cz>)
responsible for: collection of abstracts, program, accomodation, payment

Blanka Krausová
Dean's office, Faculty of Science, Palacký University
17. listopadu 12, CZ-77146 Olomouc, Czech Republic
mobile: +420733690695
e-mail: blanka.krausova@upol.cz (<mailto:blanka.krausova@upol.cz>)
responsible for: gift covenants, technical background, excursions, social program, food, ...



See congress place address 17. listopadu 12, Olomouc, Czech Republic, at [map \(<https://maps.google.cz/maps?counter/maps.php?q=17.+11stopadu+12,+Olomouc&hl=cs&ll=49.59252,17.263137&spn=0.005863,0.013314&sl=49.592515,17.262884&spn=0.023562,0.034547&t=k&br>\)](https://maps.google.cz/maps?counter/maps.php?q=17.+11stopadu+12,+Olomouc&hl=cs&ll=49.59252,17.263137&spn=0.005863,0.013314&sl=49.592515,17.262884&spn=0.023562,0.034547&t=k&br)

© 2013 16th International Congress of Myriapodology