



คณะผลิตกรรมการเกษตร  
 เลขที่ 2063 เวลา 10:45 น.  
 วันที่ 22 เม.ย. 2557

ที่ ศธ ๕๙๐๐/ว-๐๓๑๙๙

มหาวิทยาลัยแม่ฟ้าหลวง  
 ๓๓๓ หมู่ ๑ ตำบลท่าสุด อำเภอเมือง  
 จังหวัดเชียงราย ๕๗๑๐๐

๒๙ มีนาคม ๒๕๕๗

เรื่อง ขอเรียนเชิญประชุมและนำเสนอผลงานวิชาการในการประชุมวิชาการนานาชาติ

เรียน คณบดีคณะผลิตกรรมการเกษตร มหาวิทยาลัยแม่โจ้

- สิ่งที่ส่งมาด้วย ๑. รายละเอียดการประชุมวิชาการนานาชาติฯ จำนวน ๑ ฉบับ  
 ๒. โปสเตอร์ประชาสัมพันธ์การประชุมวิชาการนานาชาติ จำนวน ๑ ฉบับ

ด้วยสถาบันการศึกษาและจัดการทรัพยากรธรรมชาติและสิ่งแวดล้อม มหาวิทยาลัยแม่ฟ้าหลวง กำหนดจัดการประชุมวิชาการด้านสารสนเทศทางภูมิศาสตร์ระดับนานาชาติ ครั้งที่ ๑ (The 1<sup>st</sup> International Conference on Geo-informatics for Graduate Students and Young Researchers) ระหว่างวันที่ ๙-๑๑ มิถุนายน ๒๕๕๗ ณ อาคารพลตำรวจเอกเกา สารสิน (C5) มหาวิทยาลัยแม่ฟ้าหลวง จังหวัดเชียงราย โดยมีวัตถุประสงค์เพื่อเป็นเวทีสำคัญในการแลกเปลี่ยนความรู้และประสบการณ์ และการสร้างเครือข่ายการศึกษาทางด้านเทคโนโลยีสารสนเทศทางภูมิศาสตร์ ระหว่างอาจารย์ นักวิชาการ นักวิจัย นักเรียน นักศึกษา และผู้สนใจทั่วไป ซึ่งจะทำให้เกิดความเข้มแข็งและความก้าวหน้าทางวิชาการที่จะนำไปสู่การใช้ประโยชน์ในด้านต่างๆ

ในการนี้ มหาวิทยาลัยแม่ฟ้าหลวง ใคร่ขอเรียนเชิญท่านตลอดจน คณะจารย์ นักวิชาการ นักวิจัย และนิสิต และนักศึกษาในสังกัดของหน่วยงานของท่าน เข้าร่วมการประชุมและส่งผลงานทางวิชาการเพื่อนำเสนอในการประชุมวิชาการนานาชาติดังกล่าวได้ตั้งแต่นี้เป็นต้นไป

จึงเรียนมาเพื่อโปรดทราบและขอความอนุเคราะห์ประชาสัมพันธ์ให้ทราบโดยทั่วถึงกันด้วย จักขอบคุณยิ่ง

ขอแสดงความนับถือ

(รองศาสตราจารย์ ดร.ชยาพร วัฒนศิริ)

รองอธิการบดี ปฏิบัติการแทน

อธิการบดีมหาวิทยาลัยแม่ฟ้าหลวง

เรียน ดร. นริศ

- เพื่อโปรดทราบ  เพื่อโปรดพิจารณา  
 เห็นควรแจ้งทุกหน่วยงานทราบ  
 เห็นควรแจ้งทุกสาขาวิชา ทราบ/พิจารณา  
 เห็นควรแจ้งผู้เกี่ยวข้องทราบ

สถาบันการศึกษาและจัดการทรัพยากรธรรมชาติและสิ่งแวดล้อม  
 โทรศัพท ๐๕๓-๙๑๖๔๕๐ โทรสาร ๐๕๓-๙๑๖๔๕๒  
 E-mail: kanyapat.tra@mfu.ac.th, nrem@mfu.ac.th  
 Website: http://www.mfu.ac.th/nremc/

(ผู้ช่วยศาสตราจารย์ ดร.ชิต อินปรา)

รองคณบดีฝ่ายบริหารคณะผลิตกรรมการเกษตร

**The 1<sup>st</sup> International Conference on  
Geo-informatics for Graduate Students and Young Researchers, GI-GRAD2014  
June 9-11, 2014 at Mae Fah Luang University**

**Announcement**

The Institute for the Study of Natural Resources and Environmental Management (NREM), Mae Fah Luang University is pleased to announce that the 1<sup>st</sup> International Conference on Geo-informatics for Graduate Students and Young Researchers: "GI-GRAD2014" will be held June 9-11, 2014 in Room 302, Police General Paw Sarasin Building (C5) at Mae Fah Luang University in Chiang Rai, Thailand.



This conference is presented in collaboration with and sponsored by the Institute for the Study of Natural Resources and Environmental Management (NREM), Mae Fah Luang University, Geo-Informatics Centre for Development of Northeast Thailand, Khon Kaen University, Geo-Informatics and Space Technology Development Agency (Public Organization) (GISTDA), School of Remote Sensing, Institute of Science, Suranaree University of Technology, Remote Sensing and GIS Association of Thailand (RESGAT), Geographical Association of Thailand, Faculty of Environment and Resource Studies, Mahidol University, ESRI Thailand, i-bitz company limited, the Geomatics Company, and the Center for Global Change and Earth Observation, Michigan State University (United States).

## Introduction

Geo-informatics is widely utilized to analyze data for planning and directing natural resources and environmental management. Certainly, it is important in education, but it also provides many benefits in its practical application. Geo-informatics continues to develop analytical methods and applied concepts for implementation of massive and complicated data. The 1<sup>st</sup> International Conference on Geo-informatics for Graduate Students and Young Researchers: "GI-GRAD2014" aims to provide an opportunity for professionals and young researchers in the Geo-informatics discipline to exchange innovative ideas, demonstrate cutting edge technology and present inspiring applications.

This innovative knowledge can be utilized in earth science, health science, community and public services, marketing, public planning, resources and environmental management, geography and disaster warning. The Institute for the Study of Natural Resources and Environmental Management (NREM) at Mae Fah Luang University is significantly involved in the study and research of resource management and environmental consulting. It is located in the greater Mekong sub-region which is in a potential disaster risk area in which various environmental problems regularly occur (humanity, climate, biodiversity, soil and water). The university networks among universities and organizations in the region on both education and research topics. This conference is a forum for graduate students and young researchers to present and exchange the advancement of their research at an international level.

## Objectives

GI-GRAD2014 aims to provide an opportunity for professionals and young researchers in the Geo-informatics discipline to exchange innovative ideas, demonstrate cutting edge technology, and present inspiring applications to the academic society. Works presented at this conference could be in the form of a poster or an oral presentation. The theme of the conference is "Applications of geo-informatics for sustainable development" encompassing three main areas:

1. Science and Technology
2. Health Science
3. Humanity, Social Science, Management and Geography

## Paper and Presentation

The conference will be held June 9-11, 2014 at the Police General Paw Sarasin Building (C5), Mae Fah Luang University from 8:30 a.m.-5:30 p.m. Registration will start at 8:00 a.m. at Room 302, Police General Paw Sarasin Building (C5). The conference will include invited keynote lectures, oral presentations and poster presentations. **The conference language is English.**

Oral presentations should be approximately 20 minutes followed by 3 minutes for questions and answers. Presentations are to be in PowerPoint format. Posters are to be 80 cm. wide by 120 cm. tall. Poster content should include abstract, introduction, objectives, materials and methods, result and discussion, conclusions, acknowledgements, and references.

Applications will be reviewed by the instructors. A maximum number of 160 applicants will be selected to participate in the conference. Each participant is required to

present his or her own study at the conference. Revised research papers at instructor's suggestion will be published in the conference proceedings. A presentation at this conference can be listed as a graduate student's publication according to graduate quality standards.

#### **Instructors/Keynote Speakers**

Prof. Dr. Jiaguo Qi	Director of Center for Global Change & Earth Observations, Michigan State University, Michigan, United States.
Asst. Prof. Dr. Anond Snidvongs	Executive Director, Geo-Informatics and Space Technology Development Agency (GISTDA), Bangkok, Thailand
Dr. Sukit Viseshsin	Technical Consultant, Environmental Systems Research Institute (ESRI- Thailand), Bangkok, Thailand

#### **Important Dates**

No.	Activity	Implementation Period
1	Submission of full papers via website: <a href="http://www.gi-grad2014.mfu.ac.th">www.gi-grad2014.mfu.ac.th</a>	April 6, 2014 - May 2, 2014
2	Participant registration	April 6, 2014 – May 2, 2014
3	Early registration payment	April 6, 2014 - April 30, 2014
4	Late registration payment	May 1, 2014 - May 25, 2014
5	Acceptance notification	May 20, 2014
6	Submission of revised manuscripts	May 30, 2014
7	On-site registration	June 9-11, 2014
8	Oral presentations	June 9-11, 2014
9	Poster presentations	June 9, 2014 (4:00 p.m.-5:30 p.m.)
10	Special presentations	June 9, 2014 (5:30 p.m.-6:30 p.m.)
11	Welcome party	June 9, 2014 (7:00 p.m.-9:00 p.m.)

## **Applications**

Applications are to be submitted electronically, via the internet at: website: <http://www.gi-grad2014.mfu.ac.th>

For more information, please visit website: <http://www.gi-grad2014.mfu.ac.th> or contact:

Dr. Kanyapat Traisup  
Institute for the Study of Natural Resources and Environmental Management (NREM)  
Mae Fah Luang University  
333 Moo 1 Tambol Tasood  
Muang, Chiang Rai, Thailand 57100  
Tel: +6653-916-850  
Fax: +6653-916-852  
Email: [gi-grad2014@mfu.ac.th](mailto:gi-grad2014@mfu.ac.th)

## **Paper Submissions and Presentations**

Presenters must register and submit papers in both \*.pdf and \*.doc file formats via the internet at: [www.gi-grad2014.mfu.ac.th](http://www.gi-grad2014.mfu.ac.th).

Manuscripts are to be in English only and must contain abstract, introduction, objectives, materials and methods, results and discussion, conclusions and references.

1. The manuscript must strictly follow the format and guidelines provided by the conference.
2. Oral presentations should be presented using MS-PowerPoint. Presentation time is 20 minutes followed by 3 minutes for questions and answers. In the event there are an excessive number of papers, the conference committee may move an oral presentation paper to the poster presentation session as it deems appropriate.
3. Poster Presentation must adhere to these guidelines:
  - 3.1 Poster must be 80 cm. wide by 120 cm. tall. The content must be in English and must contain abstract, introduction, objectives, materials and methods, results and discussion, figures/graphs, conclusions as well as references.
  - 3.2 The poster presenter must be stationed at his/her poster for questions and answers during the assigned time period.

## Registration Fee

### 1. Registration Fee

Type of registration	Early Registration (by April 30, 2014)	Late/On-site Registration	Note
Thai Student	2,500 Baht	3,000 Baht	Fees include lunches/breaks, excursion and welcome dinner
Oversea Student	85 USD	100 USD	
General Participant	3,000 Baht	3,500 Baht	
Oversea Participant	100 USD	120 USD	

### 2. Registration Fee Payment

The registration fee can be paid via bank transfer to:

**Bank of Ayudhya Public Company Limited**

*Account Name: Mae Fah Luang University: Mae Fah Luang University branch*

*Account Number: 429-1-00011-6 (Savings)*

ธนาคารกรุงศรีอยุธยา สาขาออมมหาวิทยาลัยแม่ฟ้าหลวง

ชื่อบัญชี มหาวิทยาลัยแม่ฟ้าหลวง เลขที่ 429-1-00011-6 ประเภทบัญชีออมทรัพย์

Proof of payment can be provided by:

2.1 Website: Please submit your evidence and the internet at:

[www.gi-grad2014.mfu.ac.th](http://www.gi-grad2014.mfu.ac.th)

In case of any problem on submission via the website, other options are

2.2 E-mail: Please clearly provide your evidence and email to:

[gi-grad2014@mfu.ac.th](mailto:gi-grad2014@mfu.ac.th)

2.3 Fax: Please clearly provide your evidence and fax to: +6653-916-852

For further information, please contact:

The Institute for the Study of Natural Resources and Environmental Management (NREM)

Tel: +6653-91-6850

email: [gi-grad2014@mfu.ac.th](mailto:gi-grad2014@mfu.ac.th)

## Schedule

### Day 1: June 9, 2014

Time	Program
8:00 a.m. – 8:30 a.m.	Registration
8:30 a.m. – 9:00 a.m.	Opening remark at Room 302, Police General Paw Sarasin Building (C5)
9:00 a.m. – 9:45 a.m.	A keynote speech by Prof. Dr. Jiaquo Qi, Director of Center for Global Change & Earth Observations, Michigan State University
9:45 a.m. – 10:15 a.m.	Break
10:15 a.m. – 11:00 a.m.	A keynote speech by Asst. Prof. Dr. Anond Snidvongs, Executive Director of Geo-Informatics and Space Technology Development Agency (GISTDA)
11:15 a.m. – 12:30 p.m.	Presentation Sessions
12:30 p.m. – 1:30 p.m.	Lunch
1:30 p.m. – 4:30 p.m.	Presentation Sessions
4:30 p.m. – 5:30 p.m.	Poster Sessions
5:30 p.m. – 6:30 p.m.	Special Presentation “Internet GIS Application”
7:00 p.m. – 9:00 p.m.	Welcome Dinner

### Day 2: June 10, 2014 (Excursion Day)

Time	Program
8:30 a.m. – 9:00 a.m.	Excursion Registration at a meeting point
9:00 a.m. – 12:00 p.m.	White Temple (Wat Rong Khun)
12:00 pm. – 1:00 p.m.	Lunch
1:00 p.m. – 5:00 p.m.	Chiang Saen ancient town, Mekong riverside, Golden Triangle and Mae Sai (Thai-Myanmar Border)

### Day 3: June 11, 2014

Time	Program
8:00 a.m. – 8:30 a.m.	Registration
8:30 a.m. – 9:15 a.m.	A keynote speech by Dr. Sukit Viseshsin, Environmental Systems Research Institute (ESRI-Thailand)
9:15 a.m. – 11:15 a.m.	Presentation Sessions
10:15 a.m. – 10:45 a.m.	Break
11:45 a.m. – 12:30 p.m.	Poster Presentations
12:30 p.m. – 1:30 p.m.	Lunch
1:30 p.m. – 4:00 p.m.	Presentation Sessions
4:30 p.m. – 5:30 p.m.	Certification/Closing Ceremony



**White Temple (Wat Rong Khun)**



**Golden Triangle and Mekong river**



## Logistical Information

### Travel/Entry Formalities:

For information regarding visa and/or necessary travel documents to Thailand, please consult The Thailand Embassy or Consular mission in your country. Citizens of most ASEAN member countries do not need a visa to enter Thailand.

### Travel Information:

Travel information in Thai language is available at:  
<http://www.mfu.ac.th/division/admission/map.php>

### By Plane

From Chiang Rai Airport, arrange a public taxi to Mae Fah Luang University at the taxi counter in the airport (fare is 300 Baht) or by calling +6653-773-477 (fare by meter is approximately 300 Baht + call center fee of 20 Baht). Make sure that you have Thai currency for the taxi. (Exchange rate is approximately 32 Baht/1USD.) No tipping is necessary.

### By Coach

Coaches routing from Bangkok, Konkean, Nakornratchasima and Rayong to Mae Sai, Chiang Rai are in line to and pass directly in front of the university. Passengers can get off in front of the university, then take a green bus to the university center (fare is 5 Baht).

Coaches from other locations stop at various stations. First, take a blue bus to the old bus station (fare is 10 Baht). At the old bus station, take a green bus routing to Chiang Rai-Mae Sai or Chiang Rai-Chiang Sean to the university (fare is approximately 20 Baht). Get off in front of MFU and take a green bus to the university center (fare is 5 Baht). Alternatively, a taxi can be arranged by calling +6653-773-477.

### Accommodations:

Please be advised that all participants must cover the cost of their own accommodations and travel. All conference attendees must make their own hotel reservations. The special price rate provided below is for those attending the conference. When making a reservation please indicate it is for '*participation for GI-GRAD2014*' to obtain the special rate. The organizer is not responsible in the case of a price or rate change by the facility. Below is a list of some accommodation options including contact numbers and other information.

Item	Accommodation	Address/Location	Contact Number	Price (Baht)		Website
				Single	Double	
1	MFU guest house	On campus	053-917470	700	700	-
2	Wanasom Wellness & Aesthetic Resort	On campus	053-603600	1,800	1,800	<a href="http://www.mfu.ac.th/wanasom/en/contact.html">http://www.mfu.ac.th/wanasom/en/contact.html</a>
3	Wangcome Hotel	In town; 869/90 Pemawibhata Rd., Muang, Chiang Rai 57000	05371-1800	1,500	1,500	<a href="http://www.wangcome.com/">http://www.wangcome.com/</a>
4	Phufawaree	In front of the university; 888 Moo 1 Phaholyotin Rd. Tambol Tasood, Muang, Chiang Rai 57100	053-912333	800	800	<a href="http://www.phufawaree.com/">http://www.phufawaree.com/</a>

### Travel Service Provided by GI-GRAD 2014's Organizers

There are two service routes provided by the organizers for travelling from the accommodations to the conference.

Departure Time	Route: city center to MFU campus	Route: in front of and on campus
<i>Morning</i>		
6:00 a.m.	Wangcome Hotel	-
7:00 a.m.	-	Phufawaree
7:30 a.m.	-	Wanasom Wellness & Aesthetic Resort
7:45 a.m.	-	MFU guest house
8:00 a.m.	Wangcome Hotel	Phufawaree
8:30 a.m.	-	Wanasom Wellness & Aesthetic Resort
8:45 a.m.	-	MFU guest house
<i>Evening</i>		
6:15 p.m.	In front of Police General Paw Sarasin Building (C5) to Wangcome Hotel	In front of Police General Paw Sarasin Building (C5) to Phufawaree, MFU guest house, and Wanasom Wellness & Aesthetic Resort

#### Miscellaneous:

Thai currency is Baht. The Exchange rate is approximately 32 Baht/1USD or 5 Baht/1Yuen. Foreign money can be exchanged at any bank in the city center or at the Krung Sri Bank on the ground floor in the D1 building on the MFU campus or at any exchange counter at the Chiang Rai airport. ATM service is also available in the university.

#### Attractions:

##### Chiang Rai-Walking Street



source: <https://www.facebook.com/LoveisChiangRai>



The *Night Bazaar* is located between the bus station and Phaholyothin Rd in the center of town. It is a great place to view and purchase handicraft goods, food, and souvenirs. Tourists are able to enjoy local food and Northern Thai traditional performances. The market is open every day from 6:00 p.m.

*Thanon Kon Dain-Walking Street (Saturday Market)* is located on Thanon Thanalal in the center of town. The open-air market has handicraft goods, clothes, food, souvenirs and many other items. There is a dancing area where tourists and local people are able to enjoy Thai traditional dance together. The market is open from 6:00 p.m. to 10:00 p.m. on Saturdays.

*Thanon Kon Moun-Walking Street (Sunday Market)* is located along Sankhongnoi, southwest of the town center. This walking street is slightly smaller than the Saturday Walking Street. There are a variety of local products at a reasonable price along both sides of the street where Thai and foreign tourists comfortably enjoy walking and shopping. The market is open from 6:00 p.m. to 10:00 p.m.



source: <https://www.facebook.com/LoveisChiangRai>

### *Wat Phra Kaeo*

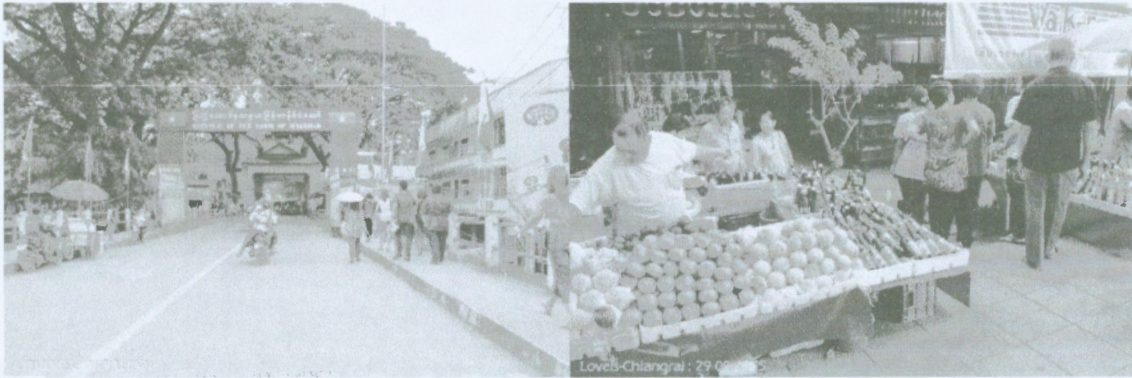
Wat Phra Kaeo, on Trairat Road, is one of the most renowned temples of Chiang Rai. Wat Phra Kaeo was where the sacred Emerald Buddha was enshrined from 1444 until it was relocated to Wat Phra Kaeo in Bangkok, after a few stops at Lampang and Vientiane. Wat Phra Kaeo now enshrines an official replica of the Emerald Buddha made of green jade. The temple also houses a 700-year bronze statue of Phra Chao Lan Thong in the Chiang Saen style ubosot which is rarely found elsewhere. Opening hours: Daily 8:00 a.m. - 5:00 p.m.

### *White Temple (Wat Rong Khun)*

The most beautiful temple built in this century. A masterpiece of artist Chalermchai Kositpipat, famed for his extravagant and unique Buddhism-related paintings, Wat Rong Khun reflects the artist's grand visions of heaven, hell and Nirvana. The main assembly hall and adjacent area are carved in white with glass mosaics. The construction started in 1997 and even the assembly hall is not yet completed: only two walls have been painted with a depiction of heaven and hell. Look closely and you'll see pictures of international heroes like Spiderman, Sailor Moon and even Ben 10 hidden in the murals. When it's completed (it could take 50 years), the temple will have nine buildings. Donations are welcome but should not exceed 10,000 Baht as Chalermchai doesn't want to be under the influence of big donors, even though he's spent more than 40 million baht of his own money. Opening hours: Daily 6:30 a.m. - 6:00 p.m. Contact: Tel. +6653-673-579

### *Mae Sai Market*

Mae Sai is Thailand's northernmost district. It is approximately 62 kilometers from Chiang Rai on Highway 110. Serving as the border town with a bridge crossing over the Mae Sai River and connecting Myanmar's Tha Khi Lek, Mae Sai is always busy with people crossing the borders, from locals making trades to tourists passing for traveling trips. There are also choices of tour services to nearby cities, such as Myanmar's Chiang Tung that is approximately 160 kilometers to the north. Opening hours: Daily 6:00 a.m. - 6:30 p.m.



source: <http://www.facebook.com/LoveisChiangRai>

There are many attractions at Chiang Rai which are not presented in this announcement. For further information, please see: <http://www.tourismthailand.org/chiang-rai>, [http://wikitravel.org/en/Chiang\\_Rai](http://wikitravel.org/en/Chiang_Rai)